

rEye Track



FEATURES

IoT Enabled with cellular backhaul

High Precision GNSS (<1m), RTK enabled

Motion sensors

Offline storage of up to three days of data

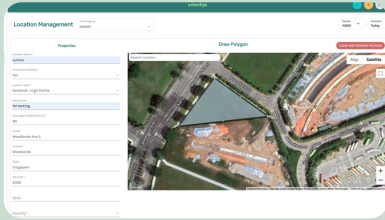
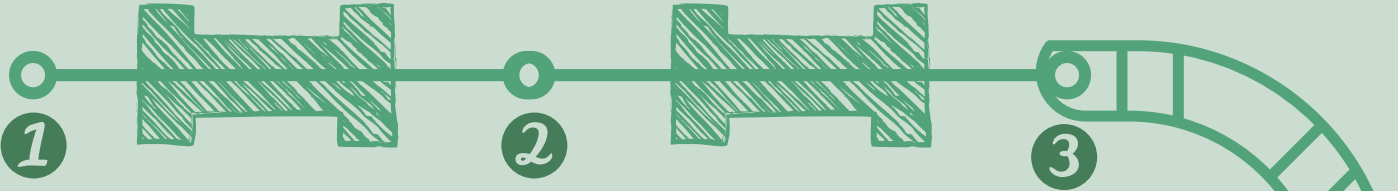
Rechargeable batteries for one-day operations

Wireless charging

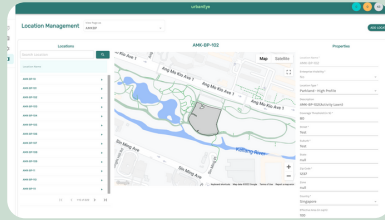
Weatherproof enclosure (IP67)

Dimensions 125 x 99 x 41 mm, Weight 360g

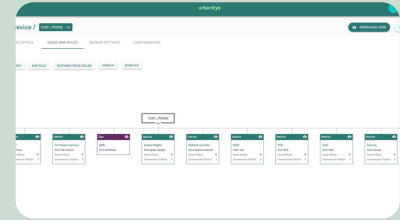
urbanEye



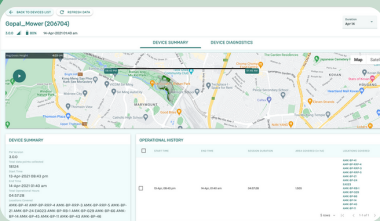
CREATE GEOFENCE BOUNDARIES



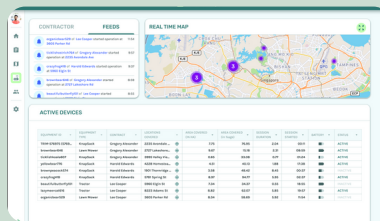
MANAGE ASSETS



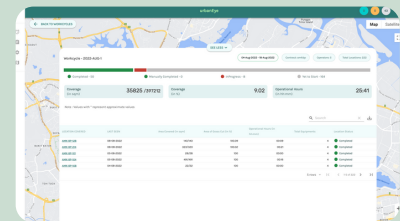
MANAGEMENT DEVICES



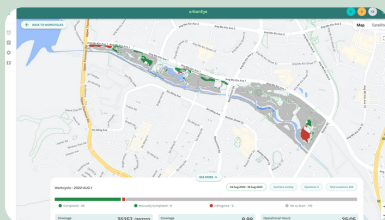
CREW MEMBER PROGRESS



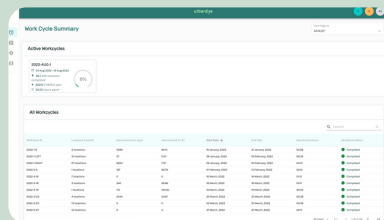
REAL-TIME CREW STATUS



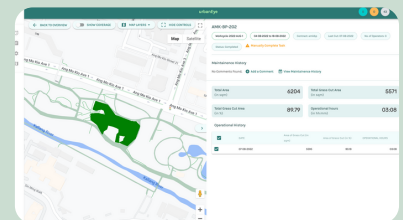
SCHEDULE WORK CYCLES



REAL-TIME WORK PROGRESS



WORK CYCLE STATUS



WORK COMPLETION REPORT